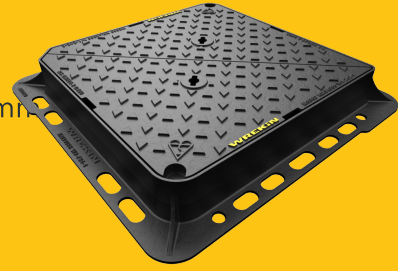


## DMTOD4/6060/KT

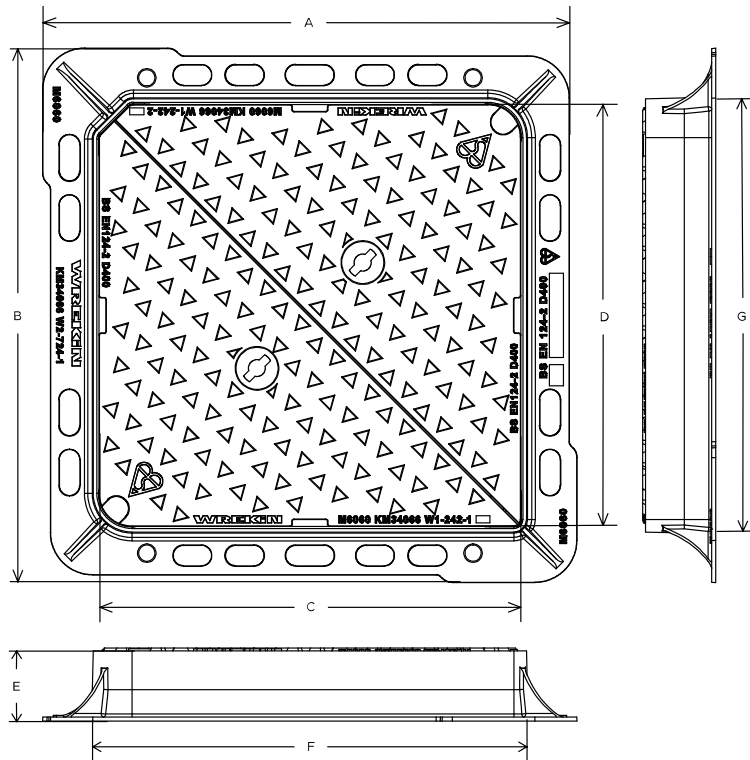
Tristar D400 manhole cover 600mm x 600mm clear opening with 100mm frame depth



RANGE	CLEAR OPENING (MM)	OVERALL FRAME (MM)	FRAME DEPTH (MM)	OPTIONS
Tristar	600 x 600	760 x 760	100	<input type="checkbox"/> Screw locking <input type="checkbox"/> Integral badging <input type="checkbox"/> Ventilation holes <input type="checkbox"/> Flood and odour control plate

## KEY FEATURES

- ✓ The enlarged frame corners help to dissipate loads onto the foundation, providing a longer service life and increased reliability.
- ✓ Safety keyway prevents accidental disengagement of the lifting key during the handling process.
- ✓ Indexed covers ensure correct fit first time, every time.
- ✓ 70+PSRV tested at top surface of chequer by UKAS accredited 3rd party.



## SPECIFICATION

### General information

<b>Stock code</b>	DMTOD4/6060/KT
<b>Primary material</b>	Ductile iron
<b>Range</b>	Tristar
<b>Category</b>	Manhole cover
<b>Flanges</b>	4

### Standards, classes and groupings

<b>Standards</b>	BS EN 124-2
<b>BS EN 124 Class</b>	D400
<b>BS EN 124 Group</b>	4
<b>Third party certified</b>	Kitemark

### Dimensions

<b>Frame shape</b>	Square
<b>Manhole shape</b>	Square
<b>Overall frame (A x B)</b>	760 mm x 760 mm
<b>Clear opening (C x D)</b>	600 mm x 600 mm
<b>Frame depth (E)</b>	100mm
<b>Base opening (F x G)</b>	620 mm x 620 mm

## AVAILABLE OPTIONS

### ✓ Screw locking

Screw locking deters unauthorised access to the chamber. An extended shank socket set is required to engage the locking screw.

### ✓ Ventilation holes

Provide additional cover ventilation in addition to the product's natural ventilation, up to the BS EN 124 allowance.

### ✓ Industry standard badging

Integral industry-standard badging e.g. SW (Storm Water) and FW (Foul Water). Details are taken at point of order.

### ✓ Flood and odour control plate

The flood and odour control plate is manufactured from steel and provides resistance to flood-water ingress and the chamber-odour egress.

## ACCESSORIES

STOCK CODE	DESCRIPTION
PC/UNIFORM/151076	Uniform chamber adjustment unit 760mm x 100mm x 15mm
PC/UNIFORM/251076	Uniform chamber adjustment unit 760mm x 100mm x 25mm
PC/UNIWEDGE/755012	Uniform support wedge 120mm x 50mm x 75mm
YPCR/U12.5	12.5Kg Unipak rapid curing polyester resin mortar
YPCR/U25	25Kg Unipak rapid curing polyester resin mortar
GRITBLOCKER	Anti-blockage keyway insert
SCREWLIFT	Manhole cover levelling system
KEY/LONG	Large cover lifting keys with a long handle (sold as a pair)
KEYS/L	Small cover combined lifting key
KEYSHEAVY	Large cover lifting keys with a standard handle (sold as a pair)

STOCK CODE	DESCRIPTION
CLICKLIFT6030	Clicklift manhole cover frame raising system 600 x 600 x 30mm
CLICKLIFT6040	Clicklift manhole cover frame raising system 600 x 600 x 40mm
CLICKLIFT6050	Clicklift manhole cover frame raising system 600 x 600 x 50mm
CLICKLIFT6060	Clicklift manhole cover frame raising system 600 x 600 x 60mm
ARMMSHELL/6060	Armadillo manhole cover protector shell 615mm x 615mm

## NOTES

The use of Armadillo is recommended where exposure to construction site traffic is likely All values stated are nominal within 2.5% tolerance.

1. Wrekin Products Ltd is continually seeking to improve our products and therefore reserves the right to alter product specifications without prior notice.
2. It is the responsibility of all users to satisfy themselves the above data is current.
3. Installation details are available on request.

