

Closed Eaves Cavity Wall Lintels - CGE90/100

Open back lintels

Benefits

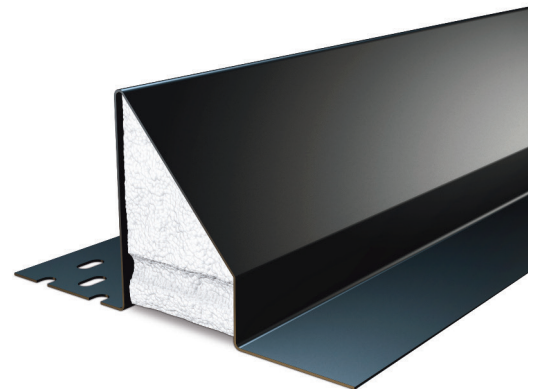
Easy-to-use open back profile

Open back style lintels allow masonry to be built up continuously on inner leaf.

Duplex Corrosion Protection System
Ensures optimum durability and longevity

Integral plaster key
With staggered slots to the inner flange and ribbed underside of insulation

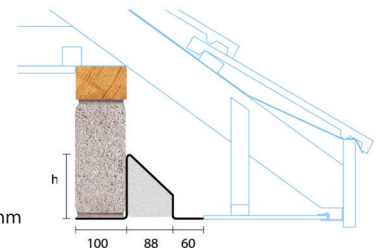
Continuous insulation
Maximising thermal efficiency, minimising cold bridging



90-125mm Cavity 100-115mm Inner Leaf



Standard lengths are available in 150mm increments up to 1800, 300mm increments from 1800mm to 2700.



Note: For heavy duty application or lintel in excess of 2.7m please refer to the CN71 and CN81 range of lintels.

CGE90/100

Standard lengths (mm)	900-1500	1800-2100	2400-2700
SWL 1:1/19:1 (kN)	20	22	20
Weight (kg/m)	6.1	8.3	10.6
Nominal height 'h' (mm)	95	115	115

To achieve the stated safe working load (SWL), closed eaves lintels must be built in with solid blockwork and continuous timber wall-plates. Allow 150mm at each end for bearing support.