

Adaptor Couplings

- Provides a quick and efficient method of connecting pipes of different materials and outside diameters
- Reliable, tried and tested products
- Large variety of sizes for a multitude of pipe configurations



CE
05

Flexseal Adaptor Couplings, sometimes referred to as reducer couplings, are designed to connect unadopted drainage pipes with different outside diameters – connecting larger drainage pipes to smaller drainage pipes and vice versa.

Adaptor Couplings are made from three component parts: one stepped moulded EPDM rubber body with two different diameters on each side and two stainless steel clamp bands, which when tightened create a secure connection.

These simple yet effective connectors can be tightened onto pipes using a nut driver and torque wrench, creating a permanent airtight and watertight seal in just seconds.



Fit horizontally or vertically

for above or below ground applications

Strong stainless steel clamp bands



High quality EPDM coupling body

Product Code	ACXXXX
Description	Flexseal Adaptor Coupling
Size Range	53-420
Material	EPDM Rubber 1.4301 (304) Stainless Steel <i>Couplings with a different material makeup are available on request.</i>
Pressure Rating	0.6bar, 8.70psi
Jetting Resistance	180bar
Temperature Range	-50°C to 80°C constant, 100°C intermittent
Tightening Torque	AC633 - AC2756 - 6Nm AC9001 – AC4209 - 13Nm
Standards	BS EN 681-1:1996 BS EN 295-4:2013 BS EN 10088-2:1995

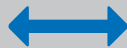
Product Code	Size Range A (mm)	Size Range B (mm)	Tightening Torque
AC633	53 - 63	40 - 50	6Nm
AC894	75 - 89	53 - 63	6Nm
AC1155	100 - 115	75 - 90	6Nm
AC1201	105 - 120	35 - 45	6Nm
AC1225	110 - 122	48 - 56	6Nm
AC1226	110 - 122	60 - 68	6Nm
AC1221	110 - 122	80 - 95	6Nm
AC5144	110 - 125	100 - 115	6Nm
AC1361	121 - 136	80 - 95	6Nm
AC1362	121 - 136	100 - 115	6Nm
AC4000	121 - 136	110 - 121	6Nm
AC1452	130 - 145	110 - 125	6Nm
AC1552	140 - 155	90 - 105	6Nm
AC1602	144 - 160	110 - 122	6Nm
AC1603	144 - 160	121 - 136	6Nm
AC1702	155 - 170	110 - 125	6Nm
AC1703	155 - 170	130 - 145	6Nm
AC1922	170 - 192	110 - 122	6Nm
AC1923	170 - 192	121 - 136	6Nm
AC1924	170 - 192	144 - 160	6Nm
AC2000	180 - 200	130 - 145	6Nm
AC6001	180 - 200	144 - 160	6Nm
AC2001	180 - 200	155 - 170	6Nm
AC6000	180 - 200	160 - 180	6Nm
AC2100	185 - 210	100 - 115	6Nm
AC2101	185 - 210	160 - 180	6Nm
AC2152o/s	195 - 215	100 - 115	6Nm
AC3108W	285 - 310	240 - 265	6Nm
AC2154	190 - 215	150 - 165	6Nm
AC2254	200 - 225	160 - 175	6Nm
AC2352	210 - 235	110 - 122	6Nm
AC2353	210 - 235	121 - 136	6Nm
AC2354	210 - 235	144 - 160	6Nm
AC2355	210 - 235	170 - 192	6Nm
AC2356	210 - 235	190 - 215	6Nm
AC2654	240 - 265	144 - 160	6Nm
AC2655	240 - 265	170 - 192	6Nm
AC2656	240 - 265	190 - 215	6Nm
AC2657	240 - 265	210 - 235	6Nm
AC2754	250 - 275	160 - 175	6Nm
AC2756	250 - 275	200 - 225	6Nm
AC9001	260 - 285	180 - 205	13Nm
AC2904	265 - 290	144 - 160	13Nm
AC2907	265 - 290	210 - 235	13Nm
AC2908	265 - 290	235 - 260	13Nm
AC2956o/s	270 - 295	185 - 210	13Nm
AC3204	295 - 320	144 - 160	13Nm
AC3205	295 - 320	170 - 192	13Nm
AC3207	295 - 320	210 - 235	13Nm
AC3208	295 - 320	240 - 265	13Nm
AC3209	295 - 320	265 - 290	13Nm
AC3351o/s	310 - 335	180 - 205	13Nm
AC3608	335 - 360	240 - 265	13Nm
AC3609	335 - 360	265 - 290	13Nm
AC3600	335 - 360	295 - 320	13Nm
AC3858	360 - 385	240 - 265	13Nm
AC3859	360 - 385	265 - 290	13Nm
AC3850	360 - 385	300 - 325	13Nm
AC4208	395 - 420	240 - 265	13Nm
AC4209	395 - 420	265 - 290	13Nm

Connecting UltraRib to Clay



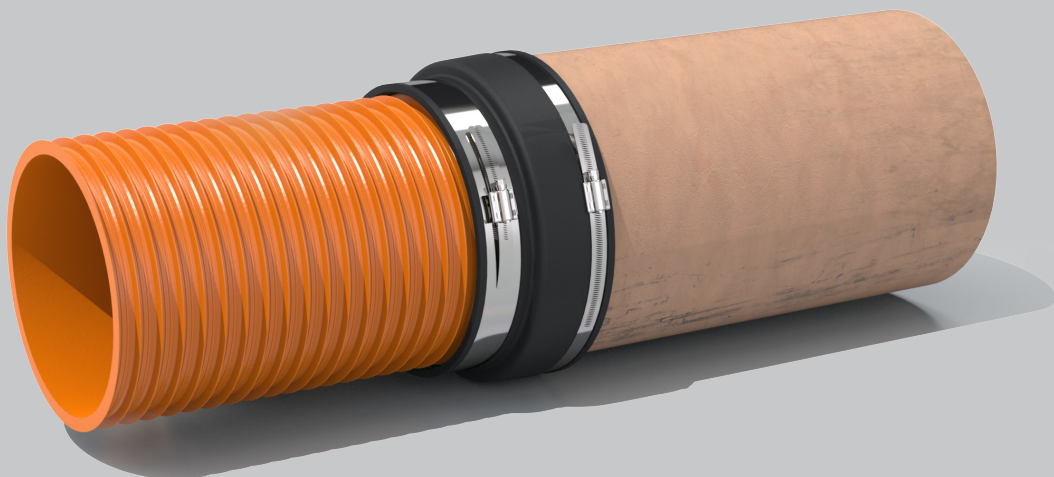
Product Code	ARXXXX
Description	Flexseal AR Adaptor Coupling
Size Range	170 - 385
Material	EPDM Rubber 1.4301 (304) Stainless Steel <i>Couplings with a different material makeup are available on request.</i>
Pressure Rating	0.6bar, 8.70psi
Jetting Resistance	180bar
Temperature Range	-50°C to 80°C constant, 100°C intermittent
Tightening Torque	6Nm / 13Nm
Standards	BS EN 681-1:1996 BS EN 295-4:2013 BS EN 10088-2:1995

Product Code	Size Range A (mm)	Size Range B (mm)	Tightening Torque
AR1500	170 - 192	160 - 170	6Nm
AR2250	260 - 285	240 - 250	13Nm
AR3000	360 - 385	325 - 335	13Nm



WIDE TENSION BAND

to create a reliable seal across multiple ribs and prevent the risk of 'slippage'.





Installation



1. Mark both pipes, from the end to be connected, half the width of the coupling, less the required joint gap, which is usually 10mm.



2. Slide the coupling fully onto the smallest pipe.



3. Align the pipes and slide the coupling onto the larger pipe, ensuring the coupling face and marked line are flush. Tighten this clamp band.



4. Position the smaller pipe, ensuring the coupling face and marked line are flush. Tighten this clamp band.



5. Tighten the clamp bands to the recommended torque.

Tamp the bedding under the pipe and re-tighten prior to backfilling.

General Information

Quality, Standards and Approvals

Flexseal has been certified by the British Standards Institution (BSI) as a company of assessed capability, with a quality management system which meets the requirements of BS EN ISO 9001:2015

Flexseal, part of the Fernco Group, are the leaders in wastewater connection innovation; utilising the most advanced methods and techniques for precision-manufactured products, all of which comply with or exceed relevant British and European standards to ensure reliability and sustainability.

Environment

Flexseal operate Environmental Management Systems which are certified to ISO 14001: 2015.

Supply

Flexseal are proud members of the Builders Merchants Federation (BMF). All Flexseal products are supplied through a national and global network of distribution and merchant partners. For stockist details, contact Flexseal.

Technical Support

Flexseal have a team of product experts on hand to support all customers with technical support and advice.

Contact Flexseal Technical Department:

Tel: +44 (0) 1226 344100

Email: technical@flexseal.co.uk

Enquiries

UK Sales:

Tel: +44 (0) 1226 340 888

Email: sales@flexseal.co.uk

International Sales:

Tel: +44 (0) 1226 344 105

Email: export.dept@flexseal.co.uk

